



**PAIR OF PANELS "DEMETER UND
DIONYSUS" GEORG KLIMT CA.
1900**

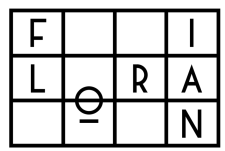
€28.000,00

Pair of reliefs, Dionysus and Demeter, Georg Klimt
(1867 - 1931), copper, chased and silver-plated, ca.
1900

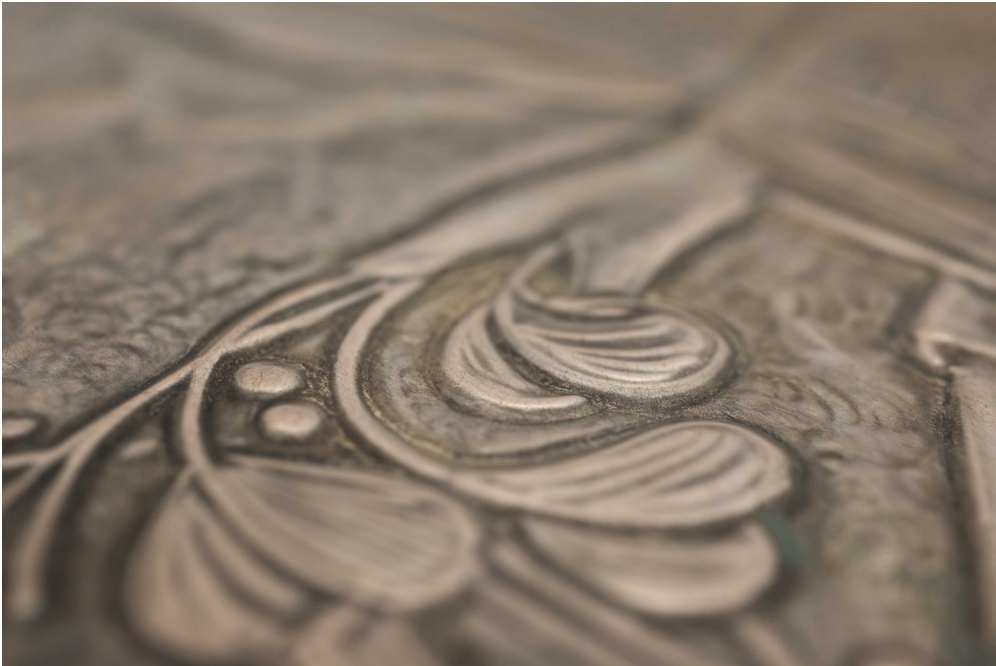
Georg Klimt's excellent craftsmanship in metal sculpting was acknowledged and valued by his contemporaries, first and foremost by his older brother Gustav Klimt, and within the Secession movement itself.

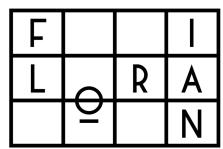
Georg Klimt executed works commissioned by the Wiener Werkstätte, by respected Viennese cabinetmakers, as well as designs by Carl Otto Czeschka and Gustav Klimt. The two doors of the Secession building designed by Joseph Maria Olbrich were also executed by this leading master of sculpture.

Our pair of reliefs impresses with their masterly quality of craftsmanship. Such reliefs were often originally intended to decorate high-quality cabinetwork. Particularly striking is the choice of the tall format of the narrow copper works, reminiscent of typical Art Nouveau posters around 1900.

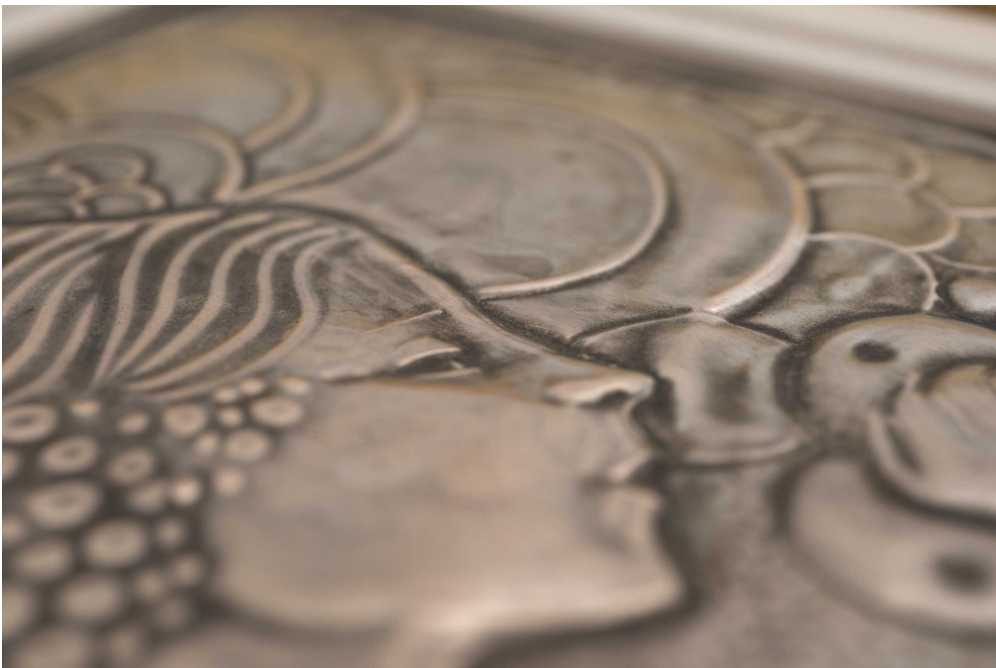


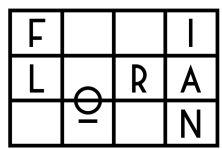
KOLHAMMER





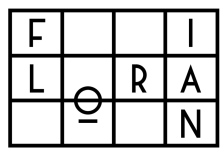
KOLHAMMER





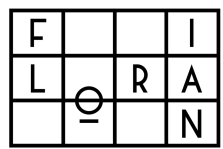
KOLHAMMER





KOLHAMMER





KOLHAMMER

