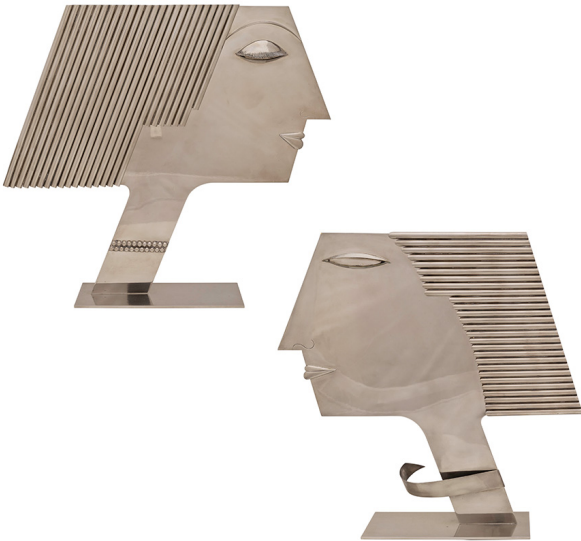


**PAIR OF HEAD SCULPTURES  
FRANZ HAGENAUER WERKSTATTE  
HAGENAUER WIEN CA. 1981**

Pair of head sculptures (character heads), designed  
by Franz Hagenauer, executed by Werkstatte  
Hagenauer Wien, ca. 1981

---

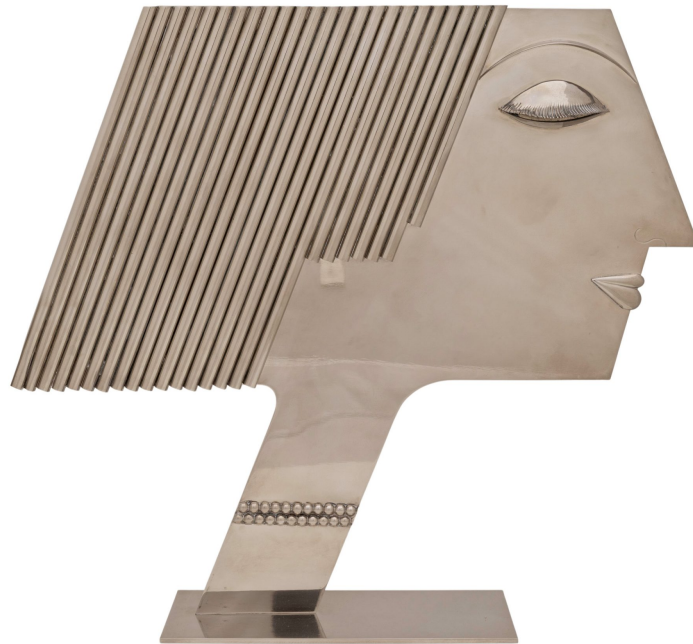


Beginning in the 1970s, and inspired by his contact with students at the University of Applied Arts in Vienna, Franz Hagenauer experimented with new techniques. Among the most impressive works from this period are paired character heads. These were hammered or, as here, made of sheet metal and tubes. This type of depiction is absolutely unique and was masterfully conceptualized by Franz Hagenauer.

Details like a necklace, lips or eyebrows complete the artworks and create the fascination of these sculptures. This couple was executed only two or three times in 1981 and 1982. It is therefore a rare pair of sculptures from the brilliant late work of Franz Hagenauer.

|   |   |   |   |
|---|---|---|---|
| F |   |   | I |
| L | ⊖ | R | A |
|   | — |   | N |

KOLHAMMER



|   |   |   |   |
|---|---|---|---|
| F |   |   | I |
| L | ⊖ | R | A |
|   | — |   | N |

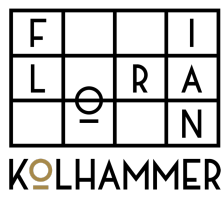
KOLHAMMER

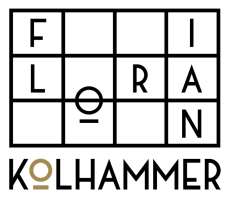


|   |   |   |   |
|---|---|---|---|
| F |   |   | I |
| L | ⊖ | R | A |
|   | — |   | N |

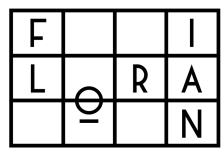
KOLHAMMER











KOLHAMMER



