



## LOETZ VASE DECOR I/116 CA. 1900

€2.500,00

Vase, Johann Loetz widow, freehand and reduced blown glass, decor I/11, painted with etching ink and polished gold, ca. 1900, marked, remains of adhesive label

---

### Dimensions

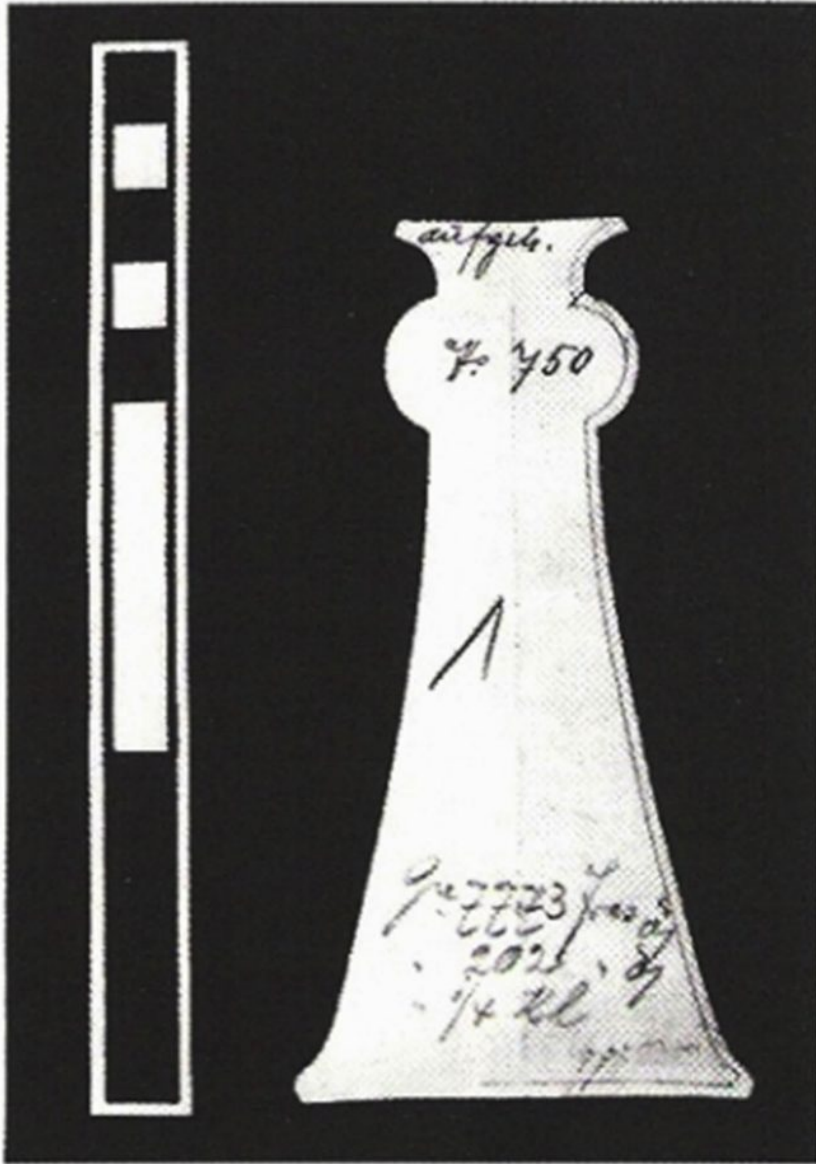
6 × 6 × 16 cm



This compelling vase is categorized as a so-called "etched vase". The production of this kind of vases was a real technical challenge. Consequently, this particular type of Loetz glass decoration using etching ink is rather rare. Furthermore, the composition of colors is stunning, with a heavy dark blue which slowly flows into a light bronze.

F			I
L	⊖	R	A
	⊖		N

KOLHAMMER



750













