



LOETZ VASE DECOR CANDIA CYTISUS CA. 1902

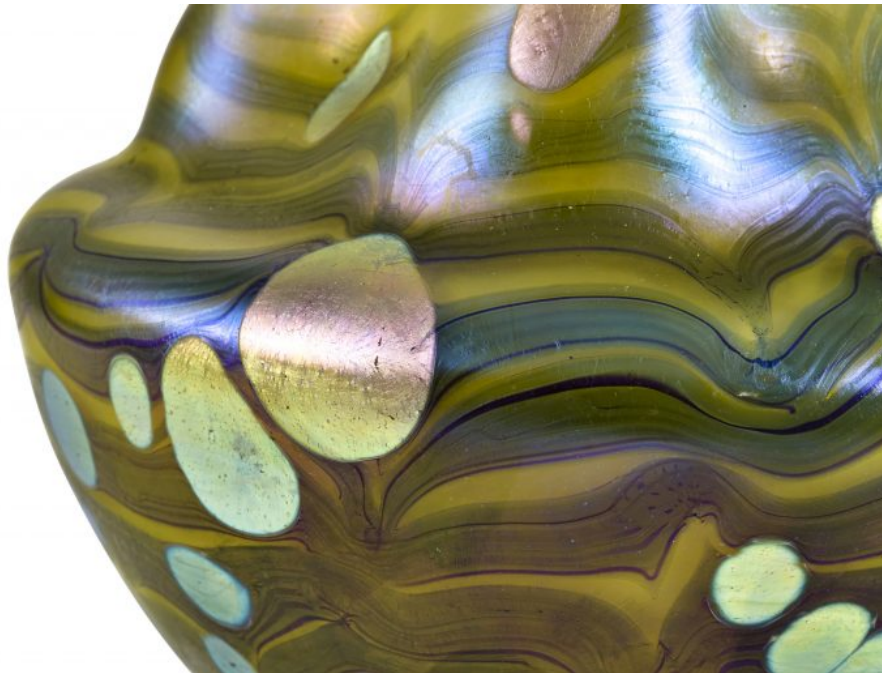
The "Cytisus" decor is certainly one of the most exquisite decor variations created by the Loetz glassworks. With its shimmering gold particles, it reflects the secessionist ornamentation of turn-of-the-century Vienna. In this way, Max Ritter von Spaun and his collaborators proved that they had their finger on the artistic and aesthetic pulse of the times.

Executed in the form of a reduced flower calyx with five indentations in the wall and a five-pass distorted mouth, this vase fits into the style of production around 1902. The fused crumbled dots seem to float on the vase like lightweight gold particles.

The complex decoration as well as the technically elaborate glass body are evidence of the great mastery of the glassblowers in Klostermühle and show why the Johann Loetz Witwe glass manufactory was one of the leading producers of precious luxury glass in Vienna 1900.







F			I
L	⊖	R	A
	⊖		N

KOLHAMMER

