

LOETZ PAIR OF VASES CYTISUS MAIGRÜN CA. 1902

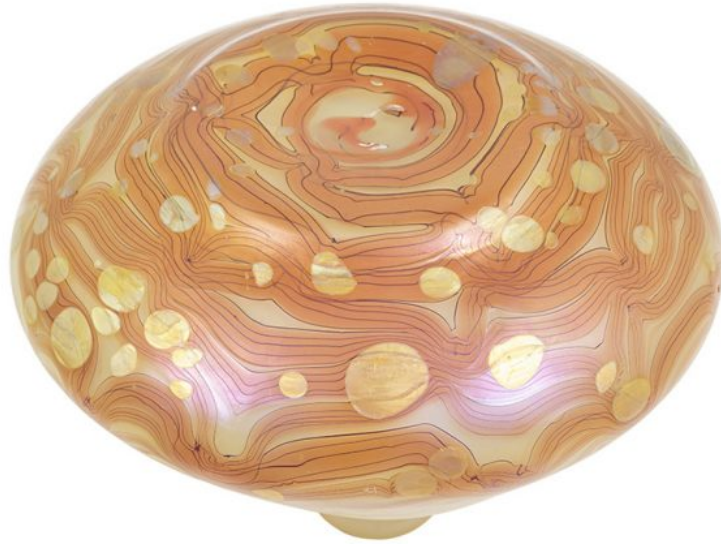
€13.000,00

Pair of vases, Johann Loetz Witwe, Cytisus Maigrün
decoration, ca. 1902

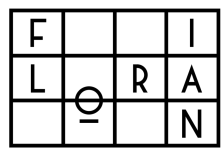


Our pair of vases with the popular decoration Cytisus, also called "golden rain" among connoisseurs, is a remarkable decoration variant of the Bohemian glassworks Johann Loetz Witwe. The secessionist artistic taste at the beginning of the 20th century is exemplarily reflected in this design. The "Beethoven frieze" by Gustav Klimt in the Vienna Secession can be cited as an example of this type of style.

This rhythmic and aesthetically effective decoration captivates with its rare combination of warped "volcanic threads" with the color "Kaiserroth" (emperor red) on the "Maigrün" (may green) background of the glass vessel. The dynamic curves of this flower calyx-like shape especially bring out the iridescence of the silver crumbled dots. Our perfectly preserved vases can be properly considered as representatives of one of the most creative phases of the Loetz glass manufacture.







KOLHAMMER

