



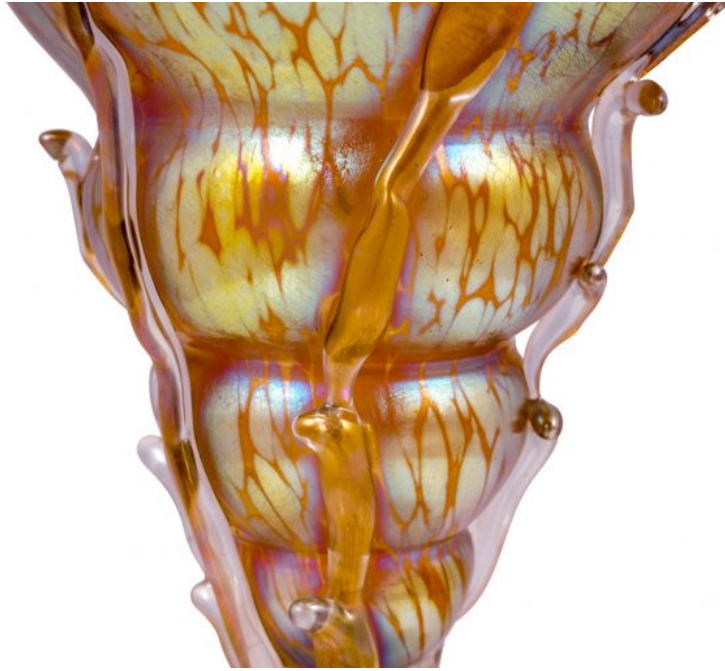
LOETZ CONCH SHELL VASE CANDIA PAPILLON CA. 1900

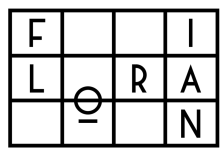
€3.100,00

Conch shell vase, Johann Loetz Witwe, Dekor Candia
Papillon, um 1900

The extravagant Candia Papillon decor lends a special brilliance to the shell shape of this collectible. The iridescent quality of this decoration not only encompasses the outside of the intricately applied silver crumbled dots, but extends into the interior of the glass shell. A characteristic of this scroll vase, therefore, is that the iridescent colors on a candia-yellow ground offer a new aesthetic experience full of brilliance and luminosity from every angle.

However, the decor is not the sole highlight of this artistic vase. The shape alone is capable of outshining so many other vases. The freehand applied and exquisitely crafted coral branches, evoke associations with the water of crashing ocean waves. Whether as a single piece or part of a series, this vase will find its rightful place in any glass collection.





KOLHAMMER



F			I
L	⊖	R	A
	—		N

KOLHAMMER



